



Government of India
Ministry of Earth Sciences
Earth System Science Organisation



Earth System Science Organisation
India Meteorological Department

PRESS RELEASE-1

Time of issue: 1300 hours IST

Dated: 20-09-2018

Sub: Depression intensified into Deep Depression over westcentral Bay of Bengal: Cyclone Alert for south Odisha - north Andhra Pradesh coasts (Yellow Message)

A depression formed over eastcentral in the night (2030 IST) of yesterday, the 19th September, 2018. Moving nearly west-northwestwards, it intensified into a deep depression and lay centred in the morning (0830 hrs IST) of today, the 20th September, 2018 over westcentral Bay of Bengal near latitude 17.5^oN and longitude 87.0^oE, about 310 km east-southeast of Kalingapatnam (Coastal Andhra Pradesh) and about 300 km east-southeast of Gopalpur (Odisha). It is likely to intensify into a cyclonic storm during next 12 hours.

It is very likely to move west-northwestwards and cross south Odisha - north Andhra Pradesh coasts between Kalingapatnam & Puri (Odisha), close to Gopalpur around mid-night of today, the 20th September as a cyclonic storm with wind speed of 60-70 kmph gusting to 80 kmph.

Forecast track and intensity are given in the following table:

Date/Time(IST)	Position (Lat. ^o N/ long. ^o E)	Maximum sustained surface wind speed (Kmph)	Category of cyclonic disturbance
20.09.18/0830	17.5/87.0	50-60 gusting to 70	Deep Depression
20.09.18/1130	17.9/86.3	55-65 gusting to 75	Deep Depression
20.09.18/1730	18.5/85.4	60-70 gusting to 80	Cyclonic Storm
20.09.18/2330	19.1/84.5	60-70 gusting to 80	Cyclonic Storm
21.09.18/0530	19.9/82.6	50-60 gusting to 70	Deep Depression
21.09.18/1730	21.5/80.0	40-50 gusting to 60	Depression
22.09.18/0530	22.8/77.5	30-40 gusting to 50	Depression

Warning:

(i) Heavy Rainfall Warning:

Meteorological Subdivision	Forecast for Day-1 upto 0830 hours IST of 21 Sept	Forecast for Day-2 upto 0830 hours IST of 22 Sept	Forecast for Day-3 upto 0830 hours IST of 23 Sept
Odisha	Rainfall at most places with heavy to very heavy falls at a few places over Odisha with extremely heavy falls at isolated places over	Rainfall at most places with heavy to very heavy falls at isolated places	Rainfall at a few places

Contact: Cyclone Warning Division, Office of the Director General of Meteorology, India Meteorological Department, Ministry of Earth Sciences.

Phone: (91) 11-24652484, FAX: (91) 11-24643128, 24623220, E-mail: cwdhq2008@gmail.com, Website: rsmcnewdelhi.imd.gov.in

Spatial rainfall distribution: Isolated: <25%, A few: 26-50%, Many: 51-75%, Most: 76-100%

Rainfall amount (mm): Heavy rain: 64.5 – 115.5, Very heavy rain: 115.6 – 204.4, Extremely heavy rain: 204.5 or more.

	south Odisha Rainfall at most places with heavy to very heavy falls at isolated places over north Odisha		
Coastal Andhra Pradesh	Rainfall at most places with heavy to very heavy falls with extremely heavy falls at isolated places over north Coastal Andhra Pradesh Rainfall at most places with heavy falls at isolated places	Rainfall at many places	Rainfall at many places
Telangana	Rainfall at most places with heavy falls at isolated places	Rainfall at most places with heavy to very heavy falls with extremely heavy falls at isolated places	Rainfall at a few places
Gangetic west Bengal	Rainfall at most places with heavy to very heavy falls at isolated places	Rainfall at many places with heavy falls at isolated places	Rainfall at a few places
Jharkhand	Rainfall at most places with heavy falls at isolated places	Rainfall at most places with heavy falls at isolated places	Rainfall at a few places
Chhattisgarh	Rainfall at most places with heavy to very heavy falls at isolated places	Rainfall at most places with heavy to very heavy falls at isolated places	Rainfall at a few places
Vidarbha	Rainfall at many places	Rainfall at most places with heavy to very heavy falls at isolated places	Rainfall at many places with heavy falls at isolated places
Rayalaseema	Rainfall at many places with heavy falls at isolated places	Rainfall at many places	Rainfall at a few places
East Madhya Pradesh	Rainfall at a few places	Rainfall at many places with heavy falls at isolated places	Rainfall at many places
West Madhya Pradesh	Rainfall at isolated places	Rainfall at many places with heavy falls at isolated places	Rainfall at most places with heavy to very heavy falls at isolated places
East Rajasthan	Rainfall at isolated places	Rainfall at a few places with heavy falls at isolated places	Rainfall at many places with heavy to very heavy falls at isolated places

Contact: Cyclone Warning Division, Office of the Director General of Meteorology,
India Meteorological Department, Ministry of Earth Sciences.

Phone: (91) 11-24652484, FAX: (91) 11-24643128, 24623220, E-mail: cwdhq2008@gmail.com, Website: rsmcnewdelhi.imd.gov.in

Spatial rainfall distribution: Isolated: <25%, A few: 26-50%, Many: 51-75%, Most: 76-100%

Rainfall amount (mm): Heavy rain: 64.5 – 115.5, Very heavy rain: 115.6 – 204.4, Extremely heavy rain: 204.5 or more.

(ii) Wind Warning:

- Squally wind speed reaching 45-55 kmph gusting to 65 kmph is very likely along & off Odisha and north Andhra Pradesh Coasts during next 06 hours. It will gradually increase becoming 60-70 kmph gusting 80 kmph from today evening for subsequent 12 hours.
- Squally wind speed reaching 40-50 kmph gusting to 60 kmph is very likely along & off West Bengal during next 24 hours.
- Squally wind speed reaching 50-60 kmph gusting to 70 kmph is very likely over central & adjoining north Bay of Bengal around the deep depression centre. It will gradually increase becoming 60-70 kmph gusting to 80 kmph over northwest & adjoining westcentral Bay of Bengal from today, the 20th September evening for subsequent 12 hours.

(iii) Sea Condition:

State of sea will be very rough over central and North Bay of Bengal and along & off Odisha, West Bengal and north Andhra Pradesh Coasts during next 06 hours and become high along & off north Andhra Pradesh & south Odisha Coasts from today, the 20th September evening for subsequent 12 hours.

(iv) Storm Surge Warning:

Storm surge of about 0.5 meter above astronomical tides likely to inundate low lying areas of districts of Vizianagaram & Srikakulam of Andhra Pradesh; Gajapati, Ganjam, Khurda and Puri districts of Odisha at the time of landfall.

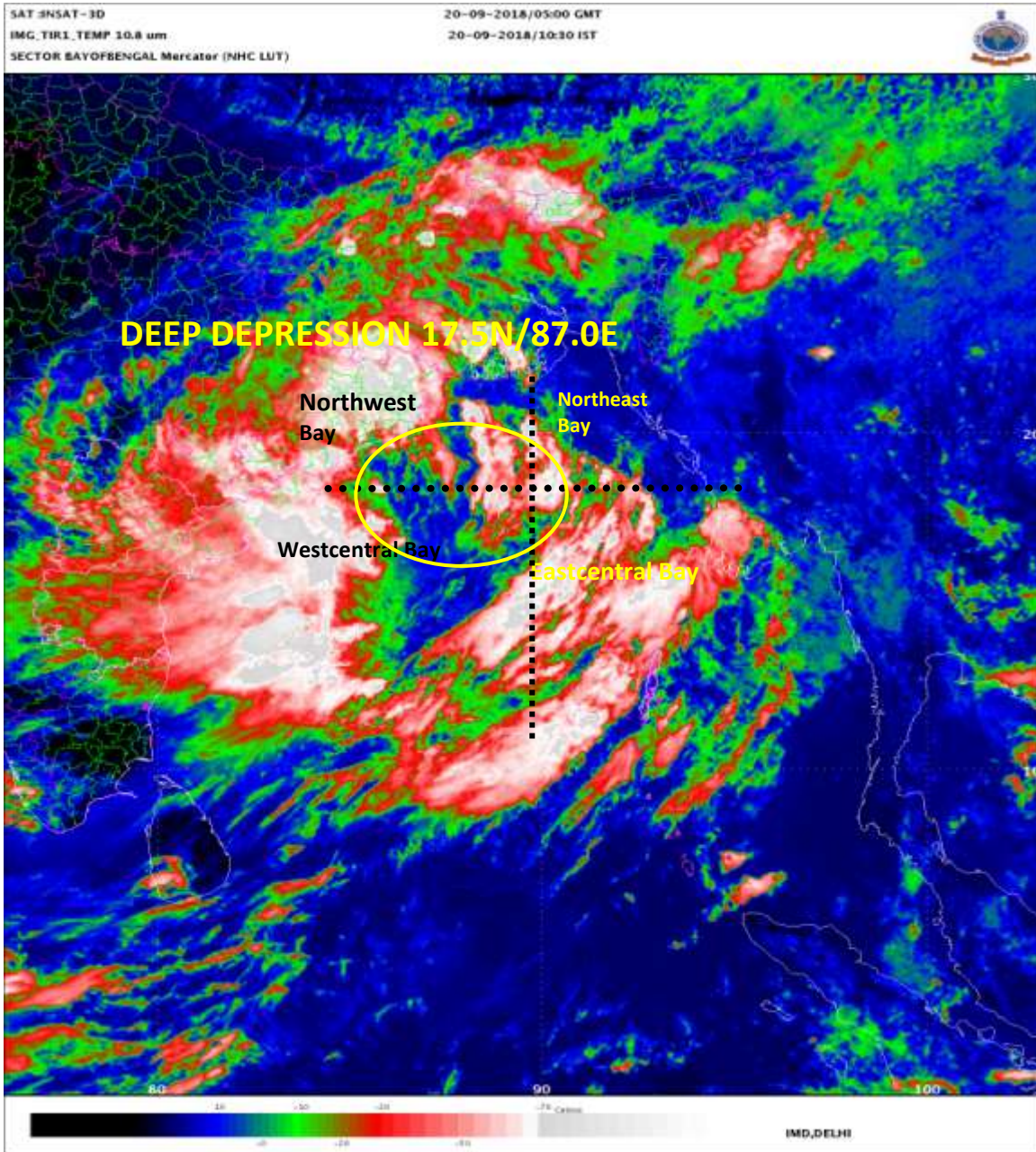
(v) Damage Expected over districts of Visakhapatnam, Vizianagaram and Srikakulam of Andhra Pradesh, Gajapati, Ganjam, Khurda, Nayagarh and Puri districts of Odisha :

Damage to thatched huts; Minor damage to power and communication lines due to breaking of branches and Major damage to Kutcha and minor damage to Pucca roads. Some damage to paddy crops, banana, papaya trees and orchards. Sea water inundation in low lying areas after erosion of Kutcha embankments.

(vi) Action Suggested:

Total suspension of fishing operations, Fishermen are advised not to venture into northwest Bay of Bengal and along & off Odisha, West Bengal and north Andhra Pradesh Coasts during next 24 hours.

Kindly visit www.imd.gov.in and www.rsmcnewdelhi.imd.gov.in for updates on the system.

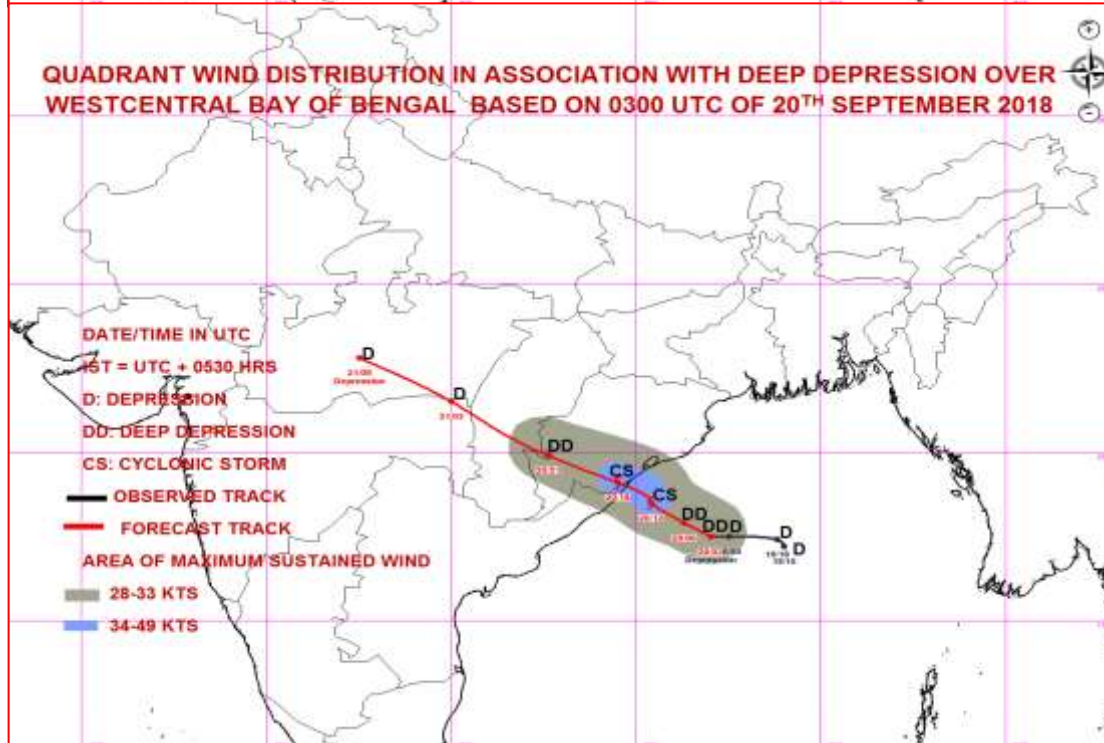
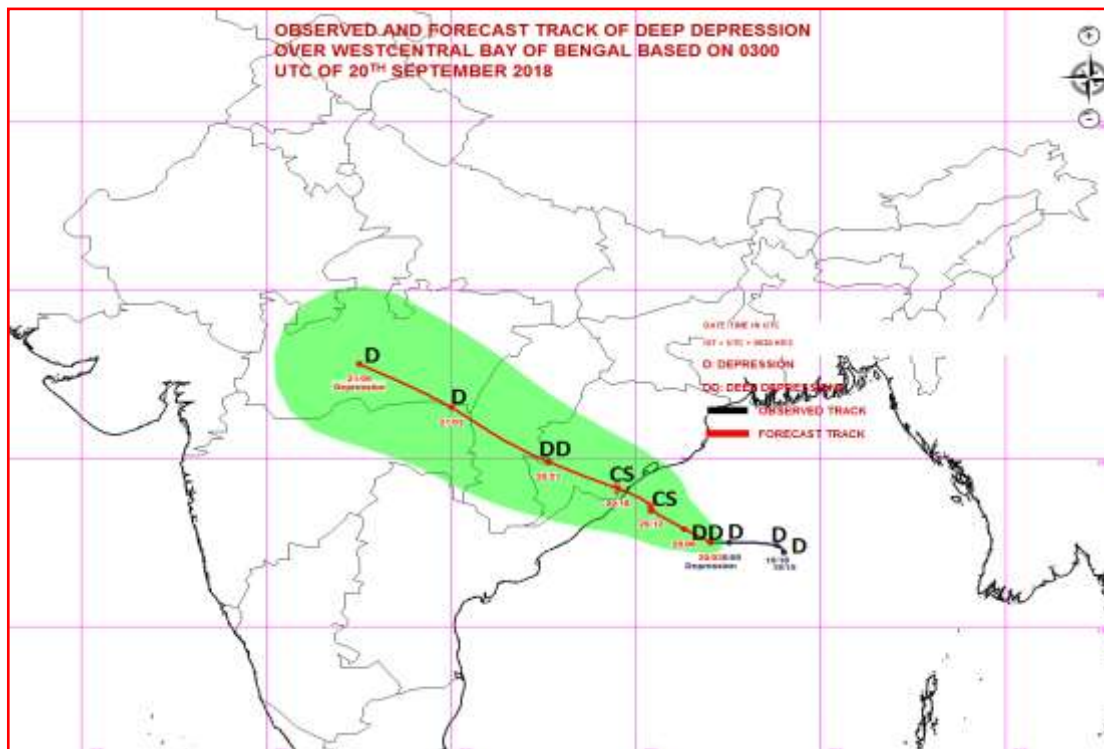


Contact: Cyclone Warning Division, Office of the Director General of Meteorology,
 India Meteorological Department, Ministry of Earth Sciences.

Phone: (91) 11-24652484, FAX: (91) 11-24643128, 24623220, E-mail: cwdhq2008@gmail.com, Website: rsmcnewdelhi.imd.gov.in

Spatial rainfall distribution: Isolated: <25%, A few: 26-50%, Many: 51-75%, Most: 76-100%

Rainfall amount (mm): Heavy rain: 64.5 – 115.5, Very heavy rain: 115.6 – 204.4, Extremely heavy rain: 204.5 or more.



Contact: Cyclone Warning Division, Office of the Director General of Meteorology,
India Meteorological Department, Ministry of Earth Sciences.

Phone: (91) 11-24652484, FAX: (91) 11-24643128, 24623220, E-mail: cwdhq2008@gmail.com, Website: rsmcnewdelhi.imd.gov.in

Spatial rainfall distribution: Isolated: <25%, A few: 26-50%, Many: 51-75%, Most: 76-100%

Rainfall amount (mm): Heavy rain: 64.5 – 115.5, Very heavy rain: 115.6 – 204.4, Extremely heavy rain: 204.5 or more.